

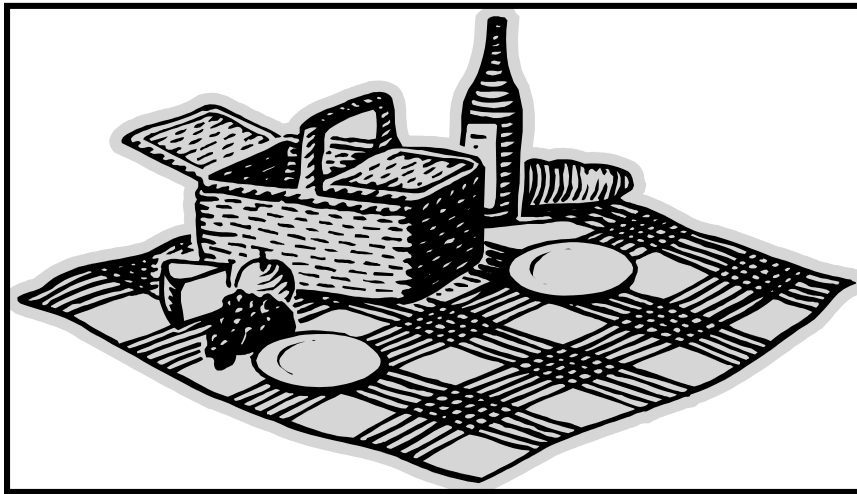
# Neighborhood News

*Country Club District Homes Association*

## ANNUAL MEETING & URBAN PICNIC

May 2010

**TUESDAY JUNE 1st**



*Energy Audit* 2

*Child Safety* 2

*Meet The Zabornys* 3

*Jackson County Parks & Recreation* 3

*Amy Thompson Run* 3

*Board of Directors* 4

*Welcome New Neighbors* 4

Spend time visiting with your neighbors on our own “beautiful island” in the midst of our city, at 61st Terrace between Ward parkway and Summit. Take time to meet your new Homes Association Board, exchange ideas, learn what’s new in the neighborhood and let us know your concerns and ideas!

Dinner will be provided by Westport Flea Market (owned by area residents Joe and Julie Zwillenberg.)

Location: Summit & 61 Terrace

Libation: 6:00 pm

Urban Picnic: 6:45 pm

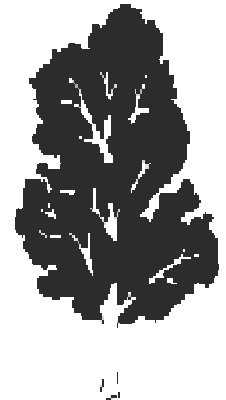
Cost : \$20/person (includes open bar and buffet dinner.)

Please RSVP by **Friday, May 21st.**

Make Checks payable to : Country Club District Homes Association

Send to: 4200 Somerset Drive,

Suite 216 Prairie Village, Ks. 66208.



## KCPL + MGE = MORE EFFICIENT ENERGY USE

Home Performance with Energy Star is an innovative, whole-house approach to improving the comfort and energy efficiency of your home. It is designed to eliminate problems such as: drafty windows and doors, rooms that are too hot or too cold and high humidity and mold.

This program offers a comprehensive approach to home improvement, remodeling, and renovation that will make your home more efficient and reduce energy costs, while improving indoor air quality and creating a more comfortable and healthier home. At the same time, you will help protect the environment through energy conservation.

Sponsored by the Missouri Department of Natural Resources' Energy Center and designed by the U.S. Department of Energy and the U.S. Environmental Protection Agency, Home Performance with Energy Star is a nationally recognized program that trains contractors in advanced techniques and state-of-the-art equipment needed to evaluate your home

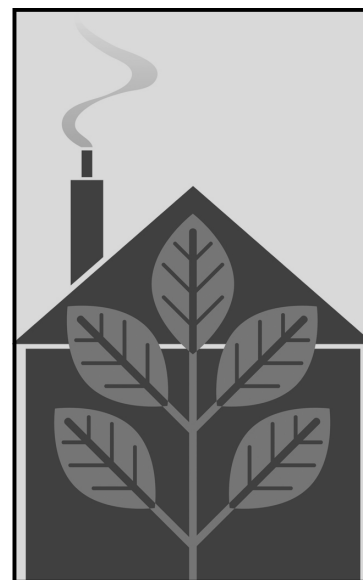
from top to bottom.

KCP&L offers a rebate of up to \$600 when you implement at least one qualifying measure. Qualifying improvements include: attic, sidewall, basement, duct-work insulation and/or other insulation, exterior windows, skylights and doors, and envelope air-sealing that achieves building tightness levels that comply with current International Energy Conservation Code.

With a comprehensive home energy audit, you will know exactly where the problem spots are in your home that are costing you money. You can work with your auditor to develop a plan to correct these deficiencies.

Some of the benefits of implementing a home energy audit include: increased comfort, lower year-round utility bills, improved health and safety in your home, reduced carbon footprint. For more information about this program go to [www.kcplsave.com](http://www.kcplsave.com).

*"Sponsored by the Missouri Department of Natural Resources' Energy Center and designed by the U.S. Department of Energy and the U.S. Environmental Protection Agency"*



## CHILD SAFETY

As the weather turns warmer, we can expect to see many more children outside playing. According to the Kansas City Police Department's crime prevention handbook, even very young children should know:

- Their full names, addresses, and phone numbers of both parents at work.
- \* How to dial 911 or 0 for help.
- It is OK to use the telephone when he/she is scared or uncomfortable.
- Not to play alone in isolated areas.
- Not to enter anyone's home without parental permission.
- A designated meeting place if separated while at a movie, parade, mall, etc.
- To never get near a car if a stranger is asking for directions or anything else.
- Avoid strangers on playgrounds, in restrooms, and at the mall.

## Meet The Zabornys

Karyn and Andy Zaborny live at 837 W. 59th Terrace with daughter, Victoria who is two-and-a-half. Victoria's brothers, Tyler and Zach, attend college in Kansas. Karyn, from Toronto, and Andy, from Syracuse, both relocated to Kansas City because of work. Looking for a family friendly area with older homes close to the Plaza, the Zabornys first moved to 60th Terrace. Here, they enjoyed great neighbors and updating/remodeling their home.

When it was time to find a house with a

bit more space, the Zabornys waited until one came on the market a few blocks away. They moved in at the first of the year and are back doing some remodeling, which they enjoy.

The past seven and a half years, the Zabornys have enjoyed watching Brookside evolve with numerous locally owned shops. In addition, they enjoy the eclectic mix of beautiful, well-kept homes with families of all ages.

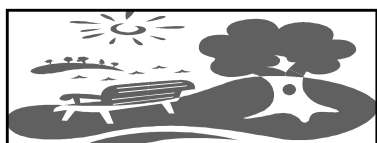
While remaining concerned with safety and security in the area, the Zabornys are

supportive of communication between neighbors and security measures being discussed.



## JACKSON COUNTY PARKS AND RECREATION

Jackson County Parks and Recreation has scheduled several family friendly outdoor activities at various locations around the county this summer. For more information about any event or to register on line, contact them at 816-503-4800 or [www.jacksongov.org/recreation](http://www.jacksongov.org/recreation).



### JUNE

5th Open Sail Day & Children's Day and National Trails Day

12th Flag Day at Fort Osage

14th Jacomo Day Camp Begins

19th Lake Fest 2010

25th-26th Longview Charity Horse Show

### JULY

4th Independence Day at Fort Osage &

Missouri Town 1855

24th KCRC Harvester's Charity Fun Fly

### AUGUST

14th The Archaeology of Fort Osage

21st Summer Wildlife Walk

22nd Jackson County Triathlon

28th-29th Longview Horse Park Association 11th Annual Benefit Horse Show

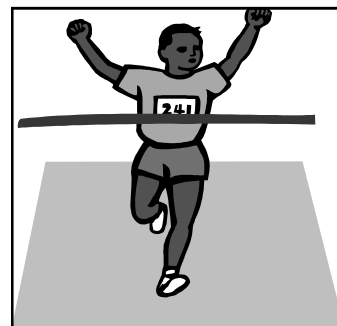
## AMY THOMPSON RUN

Memorial Day, May 31st, 2010 marks the 23 anniversary of The Amy Thompson Run for Brain Injury. Once again, our neighborhood will be showcased as thousands of runners participate in the 8K & 2 mile races.

The start and finish lines are in Loose Park. The 8K (4.97 miles) begins at 8:00 am and the Two Mile Run begins at 8:45 am.

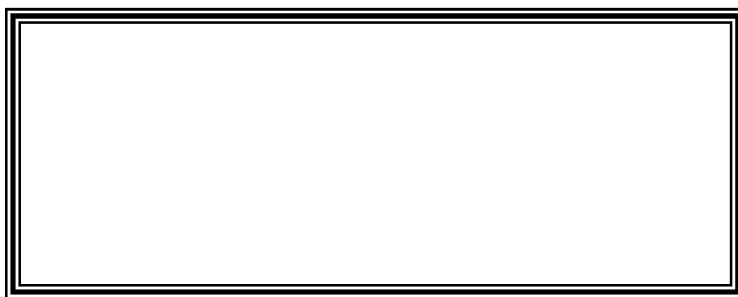
If you do not plan to race, run, walk or volunteer, it would be fun (and very much appreciated) if you joined other neighbors at the end of your block to cheer on the participants.

While the two mile course only heads south to 57 Terrace, the 8K comes south to Greenway via Pennsylvania and Summit and then returns to Loose Park via Ward Parkway.



***Country Club District  
Homes Association***

4200 Somerset - Suite 216  
Prairie Village, Kansas 66208  
913-385-2440



## **CCDHA Board of Directors**

**Charles J. Schmelzer III**

cschmelzer3@sbcglobal.net

*President*

**Cara Zanotti Newell**

henrycara@kc.rr.com

*Treasurer*

**Kent E. Mueller**

smueller5@kc.rr.com

*Vice President*

**Jonathan Kemper**

Jonathan.kemper@commercebank.com

*Webmaster*

**Nina Hollabaugh**

nthollabaugh@gmail.com

*Secretary*

**Molly McGee**

mollymcg@swbell.net

**Mary Titterington Edwards**

Mary.t.edwards@sbcglobal.net

*Newsletter*



Mathew & Rebecca Bowen  
1030 West 65th Street